

# Sheffield Community Safety Partnership

14<sup>th</sup> March 2019

Page 9

Cllr. Jim Steinke, CSP Co-Chair &  
Cabinet Member for Neighbourhoods  
and Community Safety

Agenda Item 7



Sheffield City Council



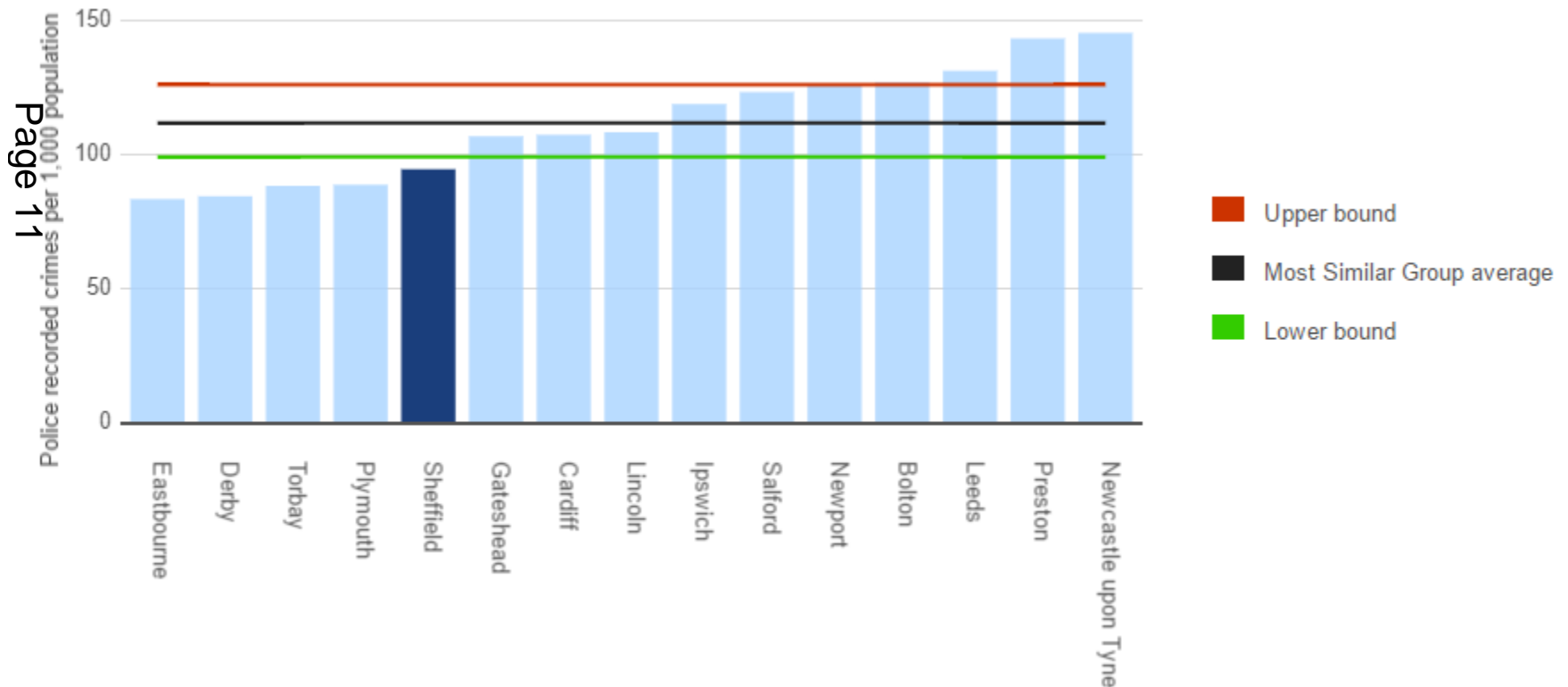
# Sheffield Community Safety Partnership

- Statutory Community Safety Partnership
  - Lead by Police and Local Authority
  - Bring together expertise, knowledge, consistency of action
- Statutory requirement to have a local strategy for tackling community safety issues



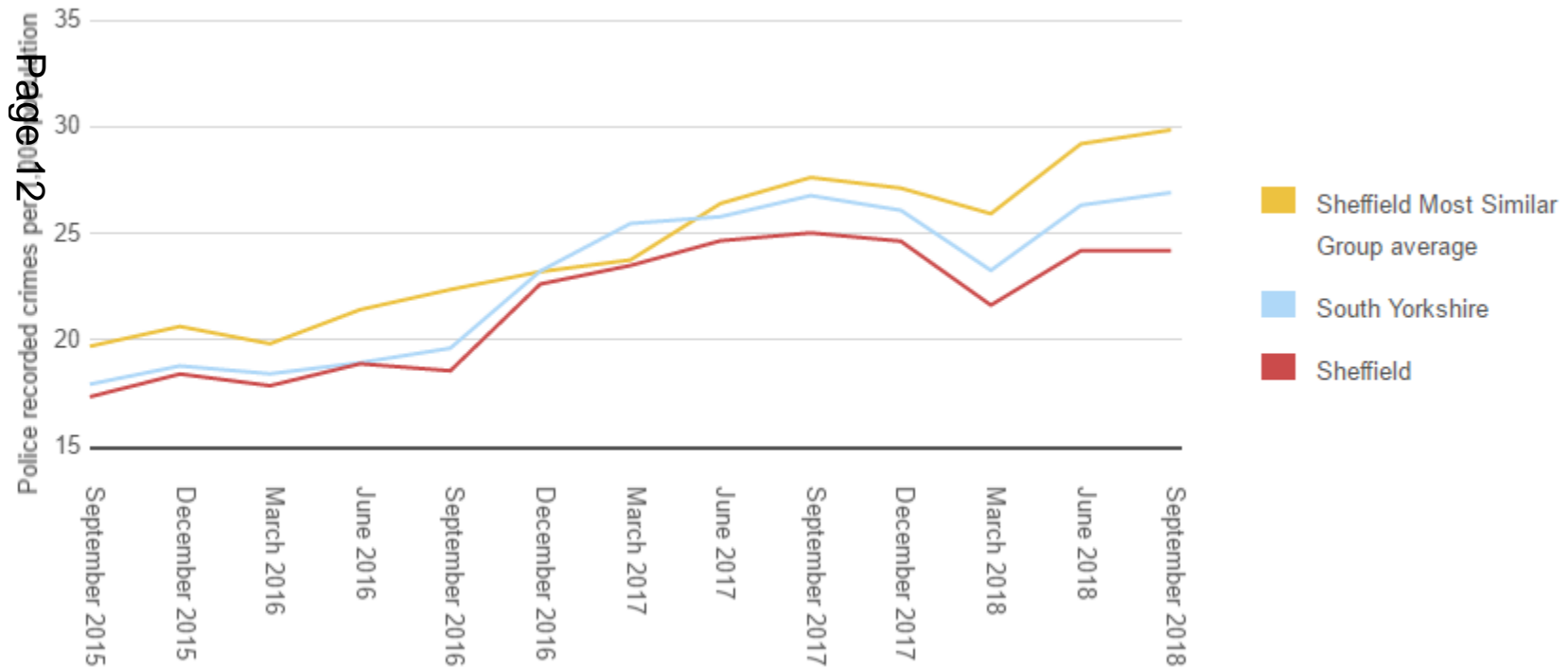
# Performance comparison

All crime per 1,000 population  
Oct 2017- Sep 2018



# Performance comparison

All crime per 1,000 population  
Quarterly 2015 - 2018



# Community Safety Priorities

- Joint Strategic Intelligence Assessment of 12 months crime and disorder information
- Informs 3yr Community Safety Plan and annual refresh
- 2018/20 Plan priorities:
  - Modern Slavery and Human Trafficking
  - Gangs and Youth Violence
  - Domestic Abuse and Violence Against Women and Girls
  - Hate Crime against the most Vulnerable
- Cross cutting themes:
  - Reducing Reoffending
  - ASB and Acquisitive Crime
  - City Centre
  - Cohesion

# Modern Slavery and Human Trafficking

- Servitude, slavery, forced or compulsory labour
- Exploitation, coercion, abuse of power, deception, threats of violence
- Legitimate or illegitimate businesses

Page 14

## Gangs and Youth Violence

- Escalating anti-social behaviour
- Street gangs
- Carrying or using weapons





# Domestic abuse and violence against women and girls

- Multi-agency Risk Assessment Conference (MARAC) process to share information and agree actions to safeguard people
- Work with perpetrators to help them change their behaviour
- Also increasing our awareness and understanding of
  - Female Genital Mutilation
  - Forced Marriage
  - Honour-based Violence
- Partnership responsibility to undertake Domestic Homicide Reviews

# Hate crime against the most vulnerable

- The victim, or any other person, believes the crime was motivated by hostility or prejudice based on a personal characteristic
- Significantly under reported nationally
- Encourage people to report it – Stop Hate UK reporting line in Sheffield

**0800 138 1625**

Sheffield City Council



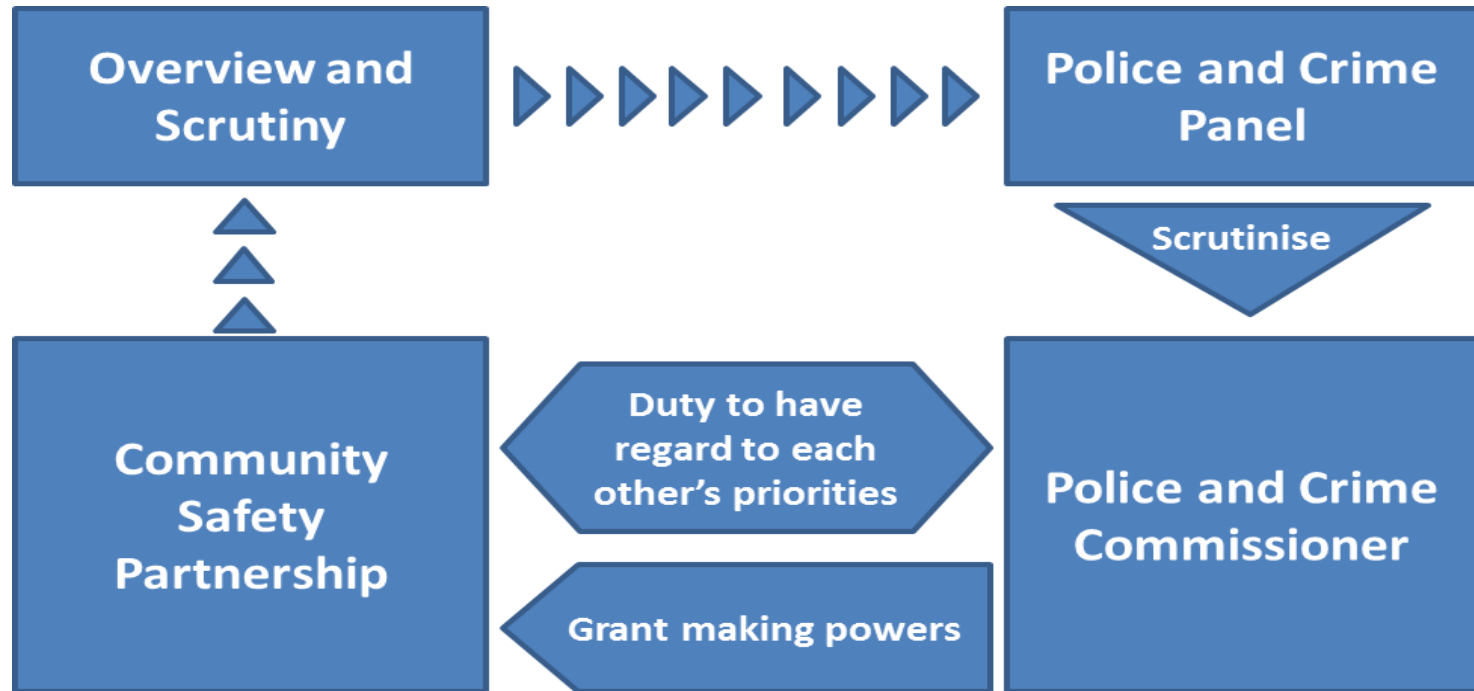
# Emerging Issues

Recommendations from JSIA are:

- Gangs and youth violence: consider a focus on drugs criminality, child criminal exploitation and wider exploitation of vulnerable people
- ASB and crime: consider a focus on Spice
- Knife crime and serious violence: continue to monitor for consideration as potential future plan priority

# Police and Crime Commissioner

- Police and Crime Panel scrutinises PCC
- Duty for PCC and CSP to have regard to each other's priorities



# Budget for community safety 2018/19

- £243k PCC grant to address PCC priorities and £74k SCC community safety:
  - Partnership analyst (top sliced from PCC)
  - Supporting and protecting vulnerable people
  - Hate Crime Coordinator in post
  - Domestic abuse perpetrator programme to help change behaviour
  - Tackling crime and anti-social behaviour through education and prevention as well as enforcement

# FORTIFY

Sheffield's multi-agency approach to tackling organised crime. Results Oct-Dec 2018:

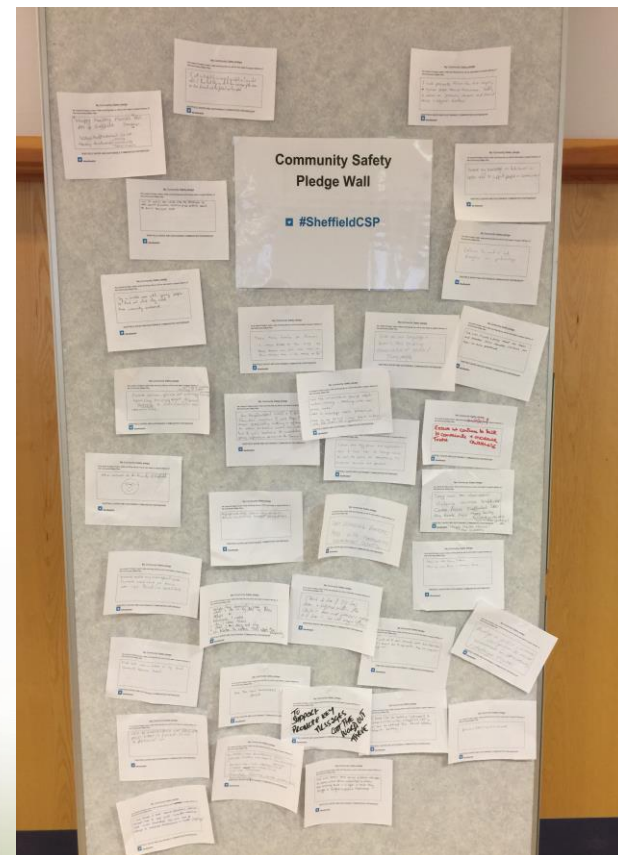
- seizures (grams): 8127 cannabis; 148 heroin, 94 crack; £10,420; 7 vehicles; and 1 firearm seized;
- 25 OCG members arrested, 12 charged; 6.5 years in custodial sentences;
- 15 children and 8 adults referred into safeguarding;
- over 50 partner disruptions, including joint operations with Housing, Trading Standards and Immigration.



# Plan Public Launch



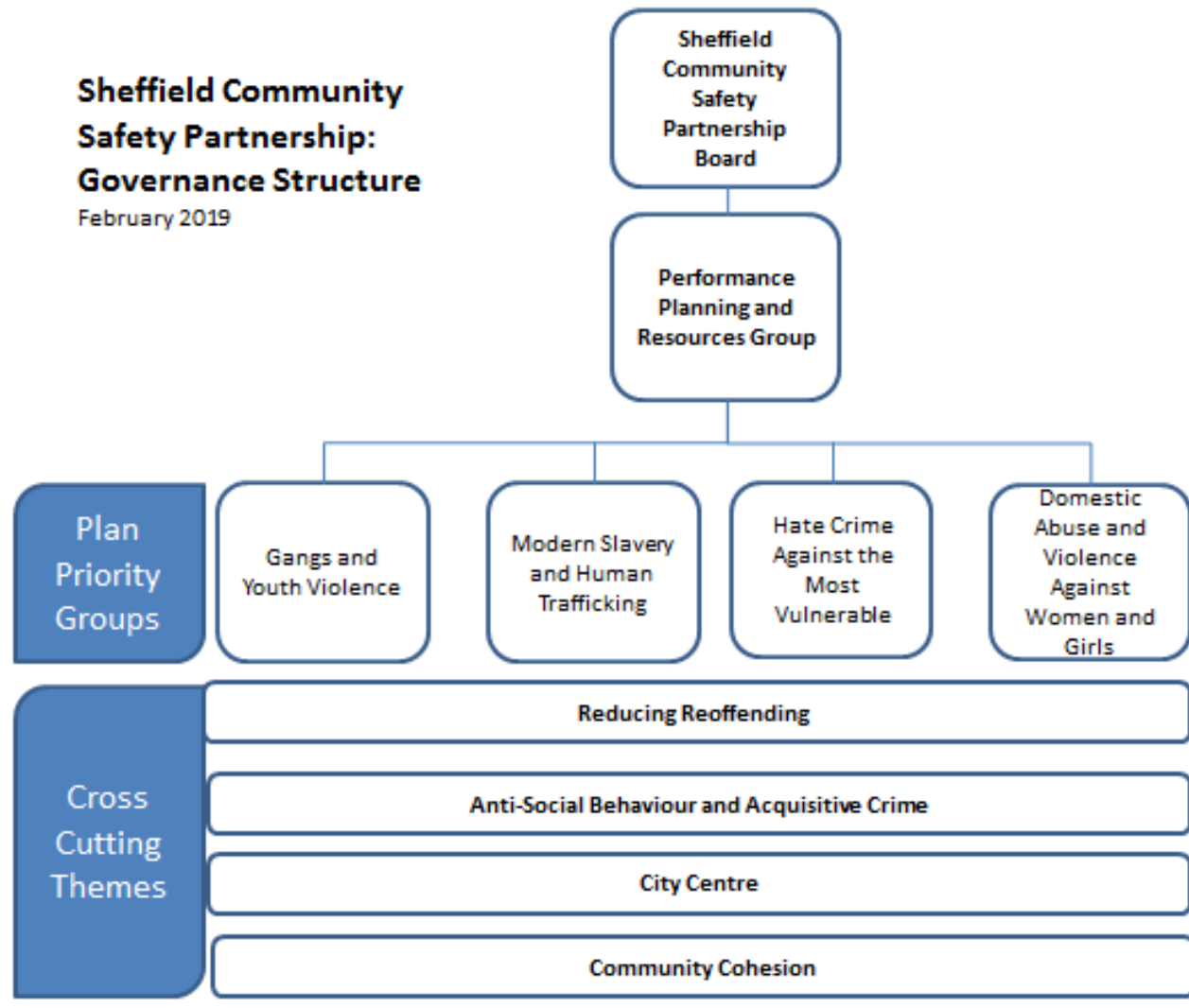
Page 21



Sheffield City Council

# Partnership Review

## Sheffield Community Safety Partnership: Governance Structure February 2019





# Communications

- SYP Neighbourhood Policing Teams established
- Relevant local issues (anonymised) now being communicated to ward councillors regularly



# Anti-social Behaviour and Community Safety Team (Safer Neighbourhood Services)

- Co-located team at Moorfoot
  - Council Housing Enforcement and Support Officers (ASB)
  - Street Response Team
  - Partnership Support
  - Community Justice Panels
  - South Yorkshire Police Inspector, Sergeant and PCs
  - SY Community Rehabilitation Company
  - Sheffield Health and Social Care Trust, Mental Health
  - South Yorkshire Fire and Rescue



# Contacts

- Anti-social Behaviour and Community Safety Team tel. 2734040 or 2734076
- [Communitysafety@sheffield.gov.uk](mailto:Communitysafety@sheffield.gov.uk)
- [HomesTMET@sheffield.gov.uk](mailto:HomesTMET@sheffield.gov.uk)



This page is intentionally left blank